

COVID-19 FIELD PLAN

**Revision
1**

JUNE 6, 2020

TABLE OF CONTENTS

1.0 PROCEDURE.....	1
1.1 Introduction.....	1
1.2 Responsibilities.....	1
1.3 Screening/Site Access.....	2
1.4 Hygiene.....	2
1.5 Social Distancing.....	3
1.6 Pre-Job Safety Instruction (PSI).....	3
1.7 Training and Communication.....	3
1.8 Orientations.....	3
2.0 SITE RULES.....	4

APPENDICES

- Appendix A – COVID-19 Exposure Control Plan
- Appendix B – COVID-19 Poster
- Appendix C – Face Mask Fact Sheet
- Appendix D – Hand Washing Poster
- Appendix E – Daily Health Screening Form
- Appendix F – Declaration Form
- Appendix G – Social Distance Poster
- Appendix H – Signs and Symptoms Poster
- Appendix I – New Hire Screening Questionnaire

1.0 PROCEDURE

1.1 Introduction

The following procedure outlines requirements that are imperative to the prevention of COVID-19.

All aspects of this procedure that are relevant to each worksite must be implemented. This procedure applies to all Workers, Short Duration Workers, and Visitors who access or conduct work on a worksite.

1.2 Responsibilities

Management: Company and Contractor

- Ensure all cleaning supplies are made available to site supervisors and workers
- Site specific PPE is readily available
- Conduct audits of site procedures and practices
- Follow all site rules for access and PPE compliance
- Wear gloves and personal mask at all times while on site

Supervisors: Company and Contractor

- Ensure workers are following site rules
- Review daily Pre-Job Safety Instruction with all workers on site
- Review and sign off Daily Health Screening form with workers and send workers home who show signs of virus
- Enforce all rules outlined in the **2.0 SITE** section
- Wear gloves and personal mask at all times while onsite
- Conduct a daily health screening toolbox meeting

Employees: Company and Contractor

- Wear gloves and personal mask at all times while on site
- Stay on designated construction access routes
- Report any violations to your supervisor
- Attend daily Pre-Job Safety Instruction and toolbox meetings

COVID-19 (CORONAVIRUS) PRECAUTIONS

PRACTICE GOOD HYGIENE

Everyone can help prevent the spread of infection by practicing good hygiene and is encouraged to implement the following measures:



Washing your hands often with soap and water for at least 20 seconds.



Avoid touching your eyes, nose or mouth.



Avoid close contact with people.



Coughing or sneezing into your sleeve or elbow and not your hands.



Reporting flu-like symptoms to your supervisor.

1.3 Screening/Site Access

- All workers to wash hands prior to entering site
- All workers to have face covering on before approaching site
- All employees to sign declaration forms prior to accessing site
- All workers and supervisors to sign off on Daily Health Screening form prior to returning to site
- Any employee showing signs of COVID-19: fever, persistent cough, shortness of breath will be directed to go home and complete the Canada Public Health “COVID-19 Symptom Self-Assessment Tool” (<https://ca.thrive.health/covid19/en>) or call 811

1.4 Hygiene

Lunch Rooms: All lunch rooms to be cleaned with disinfectant or bleach mixture before and after each shift (minimum twice a day). This includes all door handles, tables and water cooler levers.

Site Offices: All desk and computer stations to be wiped down with disinfectant before and after each shift (minimum twice a day).

Hand Wash Stations:

All site employees to wash their hands prior to any break

Hand Sanitizer: All hand sanitizer is being directed to Essential Services (Hospitals, First Responders, Medical clinics) during this period of response. When more becomes available it will be placed on site, in offices and primary access routes throughout the projects.

Select products

Cleaners	Disinfectants	Disinfectant Wipes
<ul style="list-style-type: none">• Break down grease and remove organic material from the surface.• Used separately before using disinfectants.• Can be purchased with cleaner and disinfectant combined in a single product.	<ul style="list-style-type: none">• Have chemicals that kill most germs.• Applied after the surfaces have been cleaned.• Have a drug identification number (DIN).	<ul style="list-style-type: none">• Have combined cleaners and disinfectants in one solution.• May become dry due to fast drying properties. Should be discarded if they become dry.• Not recommended for heavily soiled surfaces.

Prepare products for use

- Where possible, use pre-mixed solution.
- Read and follow manufacturer's instructions to:
 - properly prepare solution
 - allow adequate contact time for disinfectant to kill germs (see product label)
 - wear gloves when handling cleaning products including wipes
 - wear any other personal protective equipment recommended by the manufacturer

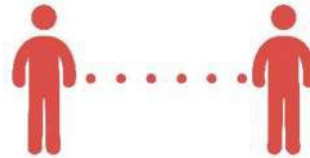


1.5 Social Distancing

- Employees, supervisors and management to maintain 6 feet when accessing site.
- If a task requires two workers to be within 6 feet, an individual assessment is to be conducted reviewing if workers show signs of COVID-19. Examples of this would be two employees in a boom lift basket or laying flooring where two employees are closer than 6 feet together but not physically touching.
- Posters are placed throughout sites as required to remind workers of the requirement of 6 feet of spacing.

COVID-19 (CORONAVIRUS)

KEEP YOUR DISTANCE!



YOU are responsible for maintaining 2 metres (6 feet) from all others. This will reduce your risk of contracting COVID-19.

1.6 Pre-Job Safety Instruction (PSI)

Foreman to conduct a verbal PSI review and write all worker names on PSI Form. No workers are to sign or touch form.

Review groups are to be small enough to apply this process while maintaining social distancing. Process to be reviewed monthly for any updates.

1.7 Training and Communication

- Posters of physical distancing, hand washing and symptoms of COVID-19 to be posted throughout job sites.
- Daily toolbox meeting with all workers on site.
- Bulletins and memorandums as processes are updated in this response.
- Posters for creating proper mix of bleach and water for disinfectant spray.

1.8 Orientations

- **Full Orientation:** Review of process for accessing site and COVID-19 Exposure Control Plan.
- **Short Duration:** There will not be any short duration orientations at this time.
- **Delivery Driver:** Review delivery PSI, stay in vehicle unless unstrapping materials, maintain social distance on site, use cell phone to communicate with site staff.

2.0 SITE RULES

- Gloves must always be worn while on site.
- Personal face mask must be worn at all times while on site.
- Employees must use designated access routes.
- Workers must wash their hands before entering site and before breaks.
- Employees must stay home if showing cold or flu-like symptoms.
- Employees must report to supervisor if they or anyone in their household has tested positive for COVID-19.
- Employees must report to supervisor if they or anyone in their household has been asked to self-isolate by a healthcare professional.
- Employees must maintain good hygiene on site.
- Employees must maintain social distancing on site (6ft) unless activity has been reviewed with supervisors.

APPENDIX A – COVID-19 EXPOSURE CONTROL PLAN

EXPOSURE CONTROL PLAN FOR COVID-19

HEALTH HAZARDS OF COVID-19

COVID-19 has been declared a global pandemic and a public health emergency in British Columbia. It is a virus that can cause respiratory illness and can lead to hospitalization and death. The effects of COVID-19 are expected to be much more severe than for seasonal influenza because most people will not have any immunity to the virus. Seniors and people with underlying health issues (including heart disease, diabetes and lung disease) are at a higher risk of hospitalization and death, but young and healthy people are also at risk.

Symptoms

Symptoms of COVID-19 are likely to include fever, cough, sneezing, sore throat and difficulty breathing.

Transmission

Exposure to COVID-19 can occur by:

- Breathing in droplets in the air that are generated when people cough or sneeze. Close contact with other people (e.g. shaking hands or hugging).
- Touching contaminated surfaces and then touching the face, mouth, or food.

Note that touching a contaminated surface and then touching another surface may cause the virus to transfer from one surface to another.

COVID-19 can be transmitted even by people who are not displaying symptoms of the disease. People who may be infected with COVID-19 should not come to work. This includes people who:

- Have symptoms of COVID-19.
- Have travelled outside of Canada within the previous 14 days. Have been exposed to someone with COVID-19.
- Share a home with someone who has symptoms of COVID-19.
- Share a home with someone who has been exposed to COVID-19.

COVID-19: WHAT ARE THE SYMPTOMS?

According to the CDC, the following symptoms are the most common:

- FEVER
- SHORTNESS OF BREATH
- COUGH

SYMPTOMS MAY APPEAR 2 TO 14 DAYS AFTER EXPOSURE.

If you develop emergency warning signs for COVID-19 get medical attention immediately. Emergency warning signs include*:

- DIFFICULTY BREATHING OR SHORTNESS OF BREATH
- PERSISTENT PAIN OR PRESSURE IN THE CHEST
- NEW CONFUSION OR INABILITY TO AROUSE
- BLUISH LIPS OR FACE

*This list is not all inclusive: Please consult your medical provider for any other symptoms that are severe or concerning.

STATEMENT OF PURPOSE

Our company is committed to providing a safe and healthy workplace for all our staff. A combination of measures will be used to minimize worker exposure to COVID-19, including the most effective control technologies available. Our work procedures will protect not only our workers, but also other workers who we are in contact with. All employees must follow the procedures outlined in this plan to prevent or reduce exposure to COVID-19.

RESPONSIBILITIES

Employer responsibilities

Our company will:

- Ensure that the materials (for example gloves, alcohol-based hand rubs and washing facilities) and other resources (for example worker training materials) required to implement and maintain the plan are readily available where and when they are required.
- Ensure that workers are able to maintain social distancing of 2 meters (6ft) apart where possible while completing their work safely.
- Select, implement and document the appropriate site-specific control measures.
- Ensure that supervisors and workers are educated and trained to an acceptable level of competency.
- Ensure that workers use appropriate personal protective equipment (PPE) — for example gloves, gowns, eye protection and respirators.
- Conduct a periodic review of the plan's effectiveness. This includes a review of the available control technologies to ensure that these are selected and used when practical.
- Maintain records of training and inspections.
- Ensure that a copy of the exposure control plan is available to workers.



Supervisor responsibilities

Our supervisors will:

- Ensure that workers are adequately instructed on the controls for the hazards at the location. Ensure that workers use proper respirators, they have been fit tested and the results are recorded. Ensure that social distancing is maintained.
- Direct work in a manner that eliminates or minimizes the risk to workers.

Worker responsibilities

Our workers will:

- Maintain social distance.
- Know the hazards of workplace.
- Follow established work procedures as directed by the employer or supervisor. Use any required PPE as instructed.
- Report any unsafe conditions or acts to the supervisor.
- Know how and when to report exposure incidents.



RISK IDENTIFICATION AND ASSESSMENT

Three primary routes of transmission are anticipated for COVID-19, all of which need to be controlled. These include contact, droplet and airborne transmission.

Breathing in droplets in the air

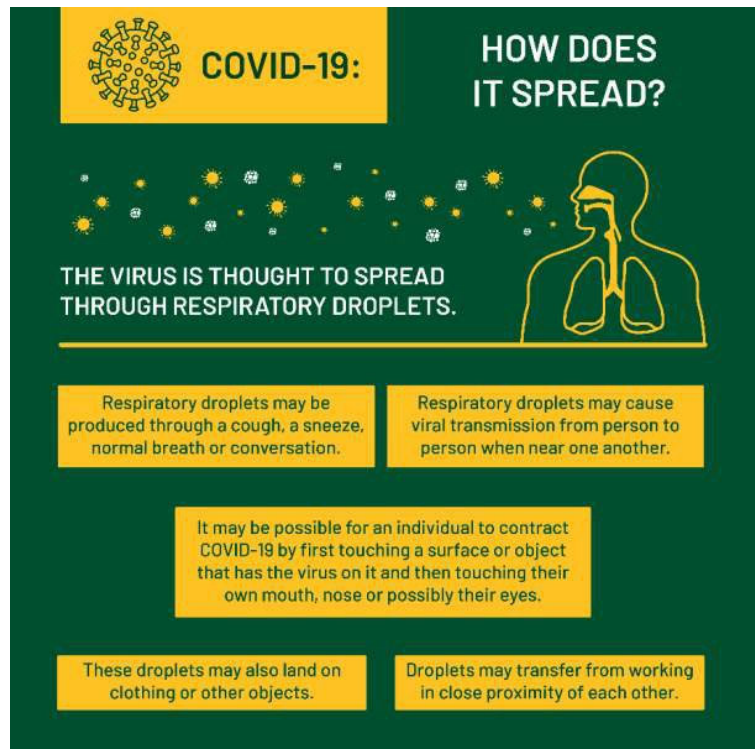
BCCDC advises that coronavirus is not transmitted through airborne transmission, however, if someone coughs or sneezes, they do generate droplets which are airborne for at least a short period of time but do not float in the air and generally fall to the ground within one to two meters. Anyone who is near the individual may risk breathing in these droplets. Social distancing (maintaining 2 meters of distance from other people at all times) will reduce the risk of this occurring.

Close contact

Close contact refers to physical contact with another person, for example shaking hands or hugging. When people cough or sneeze, droplets may deposit on their skin or clothing, especially if they cough or sneeze into their hands. People who are carriers of COVID-19 may transfer the virus from their hands or clothing to others during close contact.

Surface contact

Surfaces can become contaminated when droplets carrying COVID-19 deposit on them, or when they are touched by a person who is infected. Surface contact involves a worker touching a contaminated object such as a table, doorknob, telephone or computer keyboard or tool, and then touching the eyes, nose, or mouth. Surface contact is important to consider because COVID-19 can exist for several days on surfaces.



The following risk assessment table is adapted from Regulation Guideline G6.34-6. Using this guideline as a reference, we have determined that the risk level of our workers is low when they maintain social distancing. Our workers work on a construction work site and have little contact with the general public.

RISK ASSESSMENT FOR COVID-19	LOW RISK Workers who typically have no contact with people infected with COVID-19	MODERATE RISK Workers who may be exposed to infected people from time to time in relatively large, well ventilated workspaces	HIGH RISK Workers who may have contact with infected patients, or with infected people in small, poorly ventilated workspaces
HAND HYGIENE	Yes (washing with soap and water, using an alcohol-based hand rub or using hand wipes that contain effective disinfectant)	Yes (washing with soap and water, using an alcohol-based hand rub or using hand wipes that contain effective disinfectant)	Yes (washing with soap and water, using an alcohol-based hand rub or using hand wipes that contain effective disinfectant)
DISPOSABLE GLOVES	Not required	Not required (unless handling contaminated objects on a regular basis)	Yes, in some cases (for example, when working directly with COVID-19 patients)
APRONS, GOWNS, OR SIMILAR BODY PROTECTION	Not required	Not required	Yes, in some cases (for example, when working directly COVID-19 patients)
EYE PROTECTION – GOGGLES OR FACE SHIELD	Not required	Not required	Yes, in some cases (for example, when working directly with COVID-19 patients)
AIRWAY PROTECTION - RESPIRATORS	Not required	Not required (unless likely to be exposed to coughing and sneezing)	Yes (minimum N95 respirator or equivalent)

RISK CONTROL

The Regulation requires employers to implement infectious disease controls in the following order of preference:

- Engineering controls
- Administrative controls
- Personal protective equipment (PPE)



It is not necessary to implement engineering controls in our workplace because the risk of exposure can be controlled using administrative controls (for example social distancing, hand washing, surface cleaning and cough / sneeze etiquette) and PPE (respirators).

Hand washing

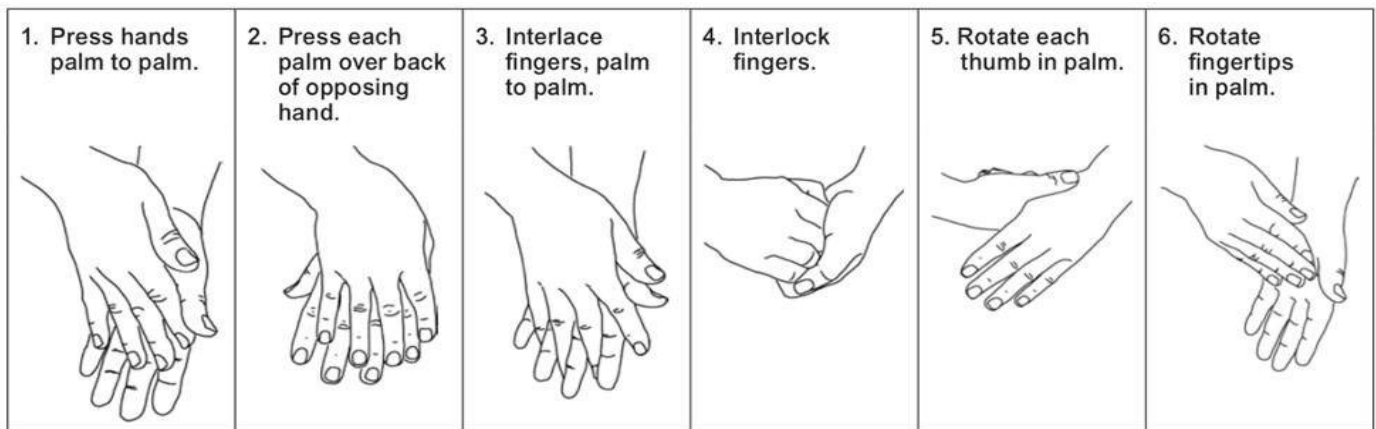
Hand washing is one of the best ways to minimize the risk of infection. Proper hand washing helps prevent the transfer of infectious material from the hands to other parts of the body—particularly the eyes, nose and mouth - or to other surfaces that are touched.



Wash your hands immediately:

- Before leaving a work area.
- After handling materials that may be contaminated.
- Before eating, drinking, smoking, handling contact lenses or applying makeup.

Hand washing procedure



Use soap and warm running water. (It doesn't have to be hot to do the job.) If water is unavailable, use a waterless hand cleanser that has at least 70% alcohol. Follow the manufacturer's instructions on how to use the cleanser. Alcohol-based hand rub dispensers are located adjacent to the washrooms and kitchen area.

Cough/sneeze etiquette

Our workers are expected to follow cough/sneeze etiquette, which is a combination of measures that minimizes the transmission of diseases via droplet or airborne routes.



- Cough/sneeze etiquette includes the following components:
- Educate workers in control measures, including hand washing.
- Post signs at entry points to instruct everyone about control measures.
- Cover your mouth and nose with a sleeve or tissue when coughing or sneezing.
- Use tissues to contain secretions and dispose of them promptly in a waste container. Offer surgical masks to people who are coughing.
- Turn your head away from others when coughing or sneezing.
- Wash hands regularly.

If workers show symptoms of COVID-19

If workers are ill with COVID-19, they should stay home. If they develop symptoms of COVID-19 while at work, they should leave the workplace. Workers should only return to the workplace once they have recovered from COVID-19. Workers should inform their manager or supervisor if they are ill with COVID-19.

Workers who suspect they may have COVID-19 should use the BC Self-Assessment Tool: <https://covid19.thrive.health> or call 811 for assistance.

WORKER TRAINING

Our workers will receive training in the following:

- The risk of exposure to COVID-19 and the signs and symptoms of the disease.
- Safe work procedures to be followed, including hand washing, social distancing and cough/sneeze etiquette.
- Location of washing facilities, including dispensing stations for alcohol-based hand rubs.
- How to seek first aid.
- How to report an exposure to or symptoms of COVID-19.

HEALTH MONITORING

Our workers will promptly report any symptoms of COVID-19 to their manager or supervisor and the first aid attendant.

RECORD KEEPING

Our company will keep records of instruction and training provided to workers regarding COVID-19, as well as exposure reports and first aid records.

ANNUAL REVIEW

We will review the exposure control plan every year and update it as necessary, in consultation with our joint health and safety committee or worker health and safety representative.

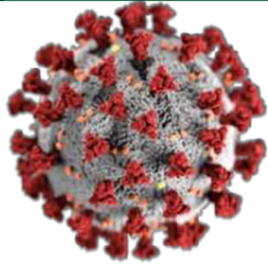
APPENDIX B – COVID-19 POSTER

CORONAVIRUS (COVID-19)

COVID-19 CONTINUES TO EVOLVE, FOR UP-TO-DATE INFORMATION YOU CAN VISIT THE CENTERS FOR DISEASE CONTROL AND PREVENTION, HEALTH CANADA AND THE WORLD HEALTH ORGANIZATION.

WHAT IS COVID-19?

COVID-19 is a lower respiratory tract infection, which means that most of the symptoms are felt in the chest and lungs.



If you are exhibiting flu-like symptoms such as fever, cough or congestion:

- Do not come to work
- Contact your supervisor
- Contact your Human Resource Department
- Consult with your medical provider or healthcare professional

WHAT ARE THE SYMPTOMS?

According to the CDC, the following symptoms are the most common:

- Fever
- Cough
- Shortness of breath

And may appear 2 to 14 days after exposure.

If you develop **emergency warning signs** for COVID-19 **get medical attention immediately.** Emergency warning signs include*:

- Difficulty breathing or shortness of breath
- Persistent pain or pressure in the chest
- **New confusion or inability to arouse**
- Bluish lips or face

This list is not all inclusive

Please consult your medical provider for any other symptoms that are severe or concerning.



PERSONAL PROTECTIVE EQUIPMENT

In addition to current PPE requirements and similar protections:

- glove use is mandatory on all jobsites (remember don't touch your face)
- storage of personal gear such as jackets, vests and rain gear is not permitted on-site unless stored in a location where contact with individuals is not possible (an infected individual may have left respiratory droplets on their clothing, which could expose others if they touch the clothing).
- use gloves, mask and eye protection when cleaning a suspected infected area.

SOCIAL DISTANCING

Is maintaining distance from other people. Staying at least 6' away from other people lessens your chances of catching COVID-19. That is because when someone coughs or sneezes, they spray small liquid droplets from their nose or mouth, which may contain the virus.



CAN COVID-19 SURVIVE ON A SURFACE?

Scientists investigated how long the virus remained infectious on these surfaces, according to the study that appeared online in the New England Journal of Medicine on 3/17/20.

The tests show that when the virus is carried by the droplets released when someone coughs or sneezes, it remains viable, or able to still infect people, in aerosols for at least **THREE HOURS.**

On plastic and stainless steel, viable virus could be detected after **THREE DAYS.**

On cardboard, the virus was not viable after **24 HOURS.**

On copper, it took **4 HOURS** for the virus to become inactive.

In terms of half-life, the research team found that it takes about **66 MINUTES** for half the virus particles to lose function if they are in an aerosol droplet.

That means that after another **1 HOUR AND 6 MINUTES**, three quarters of the virus particles will be essentially inactivated but 25% will still be viable.

MEETINGS

- No more than 20 people
- Stagger breaks and lunches
- Conduct meetings in work areas
- Use electronic devices, email, text
- No social or public events

HOW DOES COVID-19 SPREAD?

- The virus is thought to spread through respiratory droplets.
- Respiratory droplets may be produced through a cough, a sneeze, normal breath or conversation.
- These respiratory droplets may cause viral transmission from person to person when near one another.
- The respiratory droplets may also land on clothing or other objects.
- It may be possible for an individual to contract COVID-19 by first touching a surface or object that has the virus on it and then touching their own mouth, nose or possibly their eyes.

May transfer from working in close proximity of each other.

CLEAN YOUR SURFACES

Diluted household bleach solutions can be used if appropriate for the surface.

Follow manufacturer's instructions for application and proper ventilation.

Check to ensure the product is not past its expiration date.

Never mix household bleach with ammonia or any other cleanser.

Unexpired household bleach will be effective against COVID-19 when properly diluted.

Prepare a bleach solution by mixing:

- 5 tablespoons (1/3rd cup) bleach per gallon of water or
- 4 teaspoons bleach per quart of water

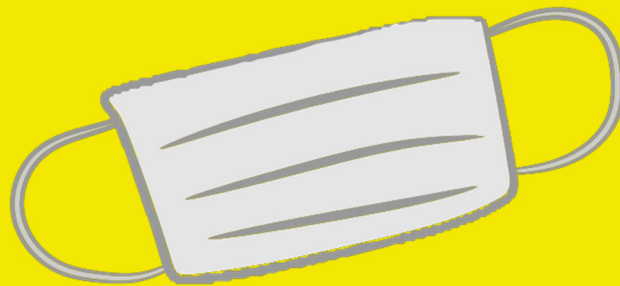
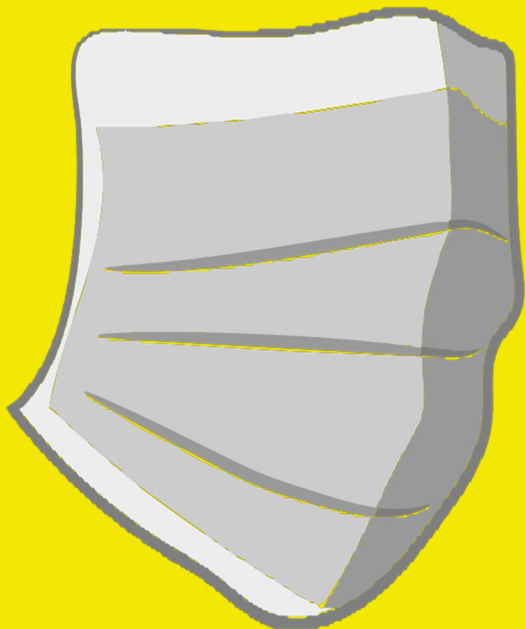
- Alcohol Solutions—
Ensure solution is 70% alcohol

HAND WASHING BEST PRACTICES

- Wet your hands with clean, running water (warm or cold) turn off the tap and apply soap.
- Lather your hands by rubbing them together with the soap.
- Be sure to lather the backs of your hands, between your fingers and under your nails.
- Scrub your hands for at least 20 seconds.
- Need a timer? Hum the "Happy Birthday" song from beginning to end twice.
- Rinse hands well under clean, running water.
- Dry hands using a clean towel or air drying them.

APPENDIX C – FACE MASK FACT SHEET

**A CLOTH FACIAL/RESPIRATORY
COVERING IS REQUIRED TO BE
WORN ON THIS SITE AT ALL
TIMES.**



APPENDIX D – HAND WASHING POSTER

COVID-19 (CORONAVIRUS) PRECAUTIONS

PROPER HAND WASHING

Washing your hands often with soap and water for at least 20 seconds is the best way to reduce the spread of germs.



WATER AND SOAP



PALM TO PALM



BETWEEN FINGERS



FOCUS ON THUMBS



BACK OF HANDS

APPENDIX E – DAILY HEALTH SCREENING FORM

MANDATORY DAILY HEALTH SCREENING & SIGN-IN

To prevent the spread of COVID-19 and reduce the potential risk of exposure to our workplace, please complete this questionnaire:

1. Are you or anyone else in your household currently experiencing any of the COVID-19 cold or flu-like symptoms*?

*Cold or flu-like symptoms including:

- New onset or worsening of existing cough
- Shortness of breath or trouble breathing
- Sore throat
- Vomiting
- Fever (> 38°C or 100.4° F)
- Severe fatigue
- Running Nose

2. Have you been asked to self-isolate by a healthcare professional or has anyone in your household tested positive for COVID-19?

If the answer is **YES** to any of the above questions, please notify your supervisor and go home.

3. Have you or anyone in your household travelled anywhere outside of Canada in the last 14 days?

If the answer is **YES**, please notify your supervisor and refer to the company's requirements for self-isolation post-travel.

If you are feeling flu-like symptoms, consult your healthcare provider, Healthlink BC by calling 8-1-1, or your local public health clinic for further assessment and guidance on when you can return to work.

By signing below the worker has acknowledged that they understand and answer "NO" to each question being asked by their supervisor

HAVE ALL WORKERS SIGN BELOW

DATE: _____

Supervisor Name

Supervisor Signature

Company

COPY OF THIS FORM TO BE SUBMITTED DAILY BY 8:30AM

APPENDIX F – DECLARATION FORM

SPECIAL PROJECTS COVID-19 DECLARATION FORM

Purpose:

This questionnaire is intended to assist with screening of visitors, contractors and consultants to the project site, specifically to determine if they should be denied/granted access.

Item	Assessment Questions	Yes	No
1	Have you travelled outside of Canada in the last 14 days – to any of the identified 'COVID-19 Travel Health Notice' countries?		
2	Have you experienced symptoms of a fever in the last 14 days?		
3	Have you experienced symptoms of a sore throat in the last 14 days?		
4	Have you experienced trouble breathing or shortness of breath in the last 14 days?		
5	Have you been advised by your physician or Public Health Inspector to be in self-isolation within the last 14 days?		
6	Have you been in contact with someone that is confirmed to be a COVID-19 positive case in the last 14 days?		
7	Have you been in direct contact with anyone in the last 14 days who has had COVID-19 symptoms or who is working in a HIGH-RISK healthcare environment?		
8	Have you been asked to self-isolate in the last 14 days?		

Site Rules for work:

- Gloves must be worn at all times.
- Face masks to be worn at all times.
- All workers and supervisors must be 6 feet (2 metres) away from each other for social distancing requirements.
- Hands must be washed at breaks for a minimum of 20 seconds.
- Use designated access routes.
- Report any symptoms of COVID-19 to supervisor.

Name _____

Signature _____

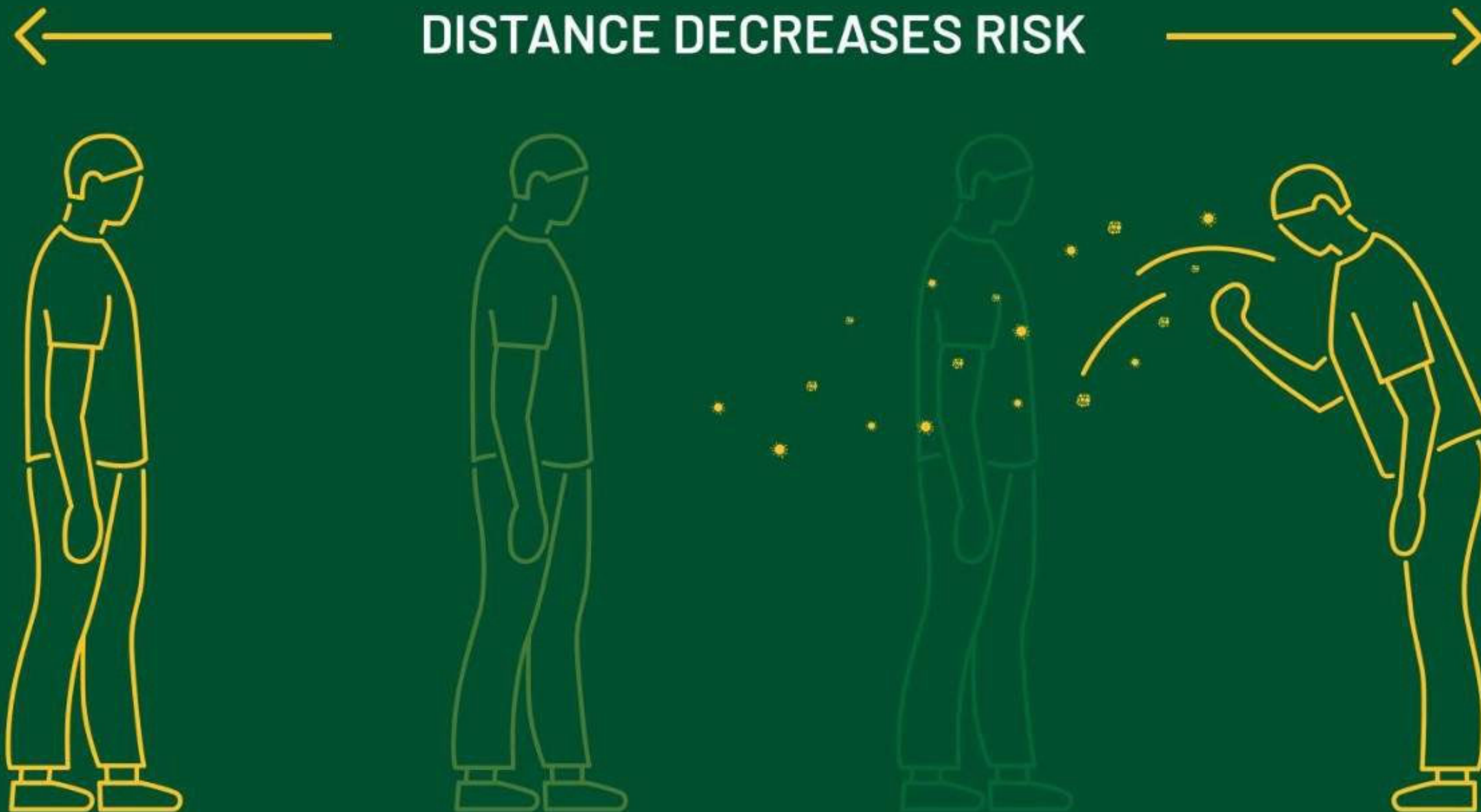
Date _____

Sub-Contractor Name _____

APPENDIX G – SOCIAL DISTANCE POSTER

SOCIAL DISTANCING REQUIREMENT

ALL PERSONS ARE REQUIRED TO MAINTAIN A DISTANCE OF 6 FEET OR 2 METRES BETWEEN YOU AND THE NEXT PERSON.



APPENDIX H – SIGNS AND SYMPTOMS POSTER

HSE (COVID-19) CORONAVIRUS

WHAT IS COVID-19?

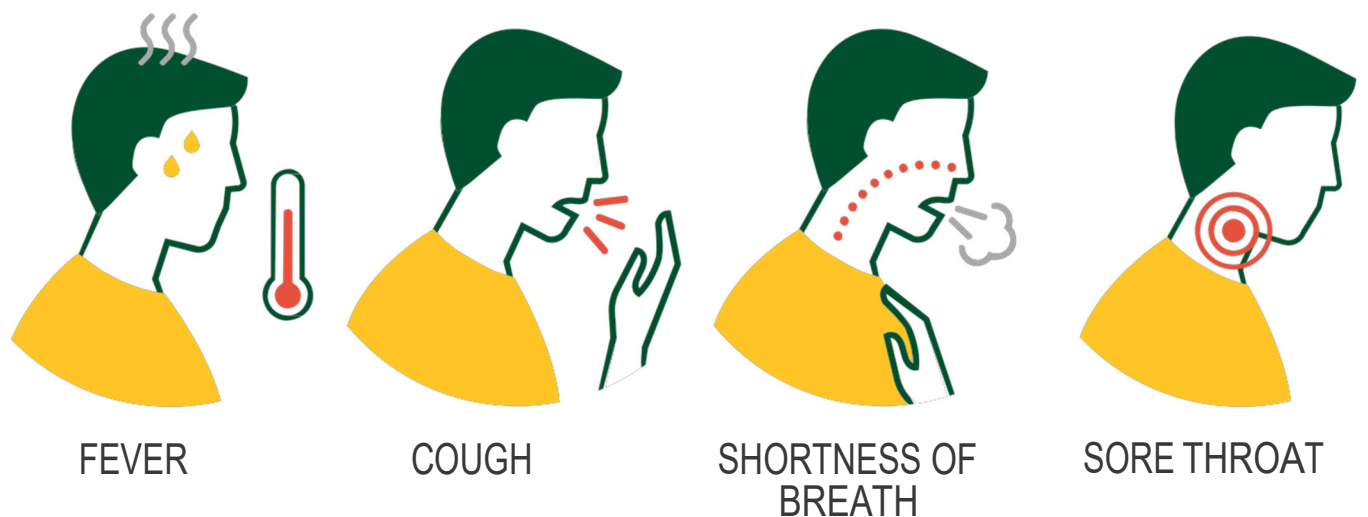
COVID-19 is a lower respiratory tract infection, which means that most of the symptoms are felt in the chest and lungs.

If you are exhibiting flu-like symptoms such as fever, cough or congestion:

- *Do not come to work*
- *Contact your supervisor*
- *Contact your Human Resource Department*
- *Consult with your medical provider or healthcare professional*

WHAT ARE THE SYMPTOMS?

According to the CDC, the following symptoms are the most common:



If you develop emergency warning signs for COVID-19 get medical attention immediately. Emergency warning signs include:

- *Difficulty breathing or shortness of breath*
- *Persistent pain or pressure in the chest*
- *New confusion or inability to arouse*
- *Bluish lips or face*

THIS LIST IS NOT ALL INCLUSIVE

Please consult your medical provider for any other symptoms that are severe or concerning.

APPENDIX I – NEW HIRE SCREENING QUESTIONNAIRE

COVID-19 (CORONAVIRUS) NEW HIRE SCREENING QUESTIONNAIRE

Name: _____ **Employer:** _____

Project Site: _____ **Date:** _____

1. In the past 14 days have you had any of the following COVID-19 symptoms: fever, cough, shortness of breath, sore throat? **YES** **NO**
2. In the past 14 days have you come in contact with anyone who has tested positive for COVID-19? **YES** **NO**
3. In the past 14 days have you returned from travel to any locations outside of the country? **YES** **NO**

If you answered 'YES' to any of the above questions, you are not permitted on site at this time. Contact your supervisor immediately, return home and contact your healthcare provider.

NOTE: If, at any time during your work, your response to the above questions changes to 'YES', notify your supervisor immediately and remove yourself from any project, and notify your healthcare provider.

Please coordinate with your site representative on what to do with your completed form prior to travelling to the project location.

APPENDIX J – SITE ACCESS QUESTIONNAIRE

COVID-19 SITE ACCESS QUESTIONNAIRE

**ONLY WORKERS WHO ANSWER 'NO' TO ALL QUESTIONS
ARE PERMITTED ACCESS.**

- Are you experiencing any of the following COVID-19 symptoms?
 - Fever
 - Cough
 - Shortness of breath
 - Sore throat

- In the past 14 days have you come in contact with anyone who has tested positive for COVID-19?

- In the past 14 days have you returned from travel to any other locations outside of the country?

**IF 'YES', CONTACT YOUR SUPERVISOR
IMMEDIATELY, RETURN HOME AND CONTACT
YOUR HEALTHCARE PROVIDER.**

